

Watertight Doors

- Type 120-61



01



02

Trend Marine Products is delighted to introduce its new range of DNV tested and approved watertight doors.

- Aluminium construction for light weight
- Custom sizes
- Available with viewing window
- Featuring 6 or 8 point locking
- Bolt-in or weld-in construction
- Pressure tested from one side or two
- Certified to DNV: 5m head of water IACS SC156

These doors are manufactured at our factory in the UK and are sold throughout the UK, Europe, Middle East, Far East and North America.

Approvals:

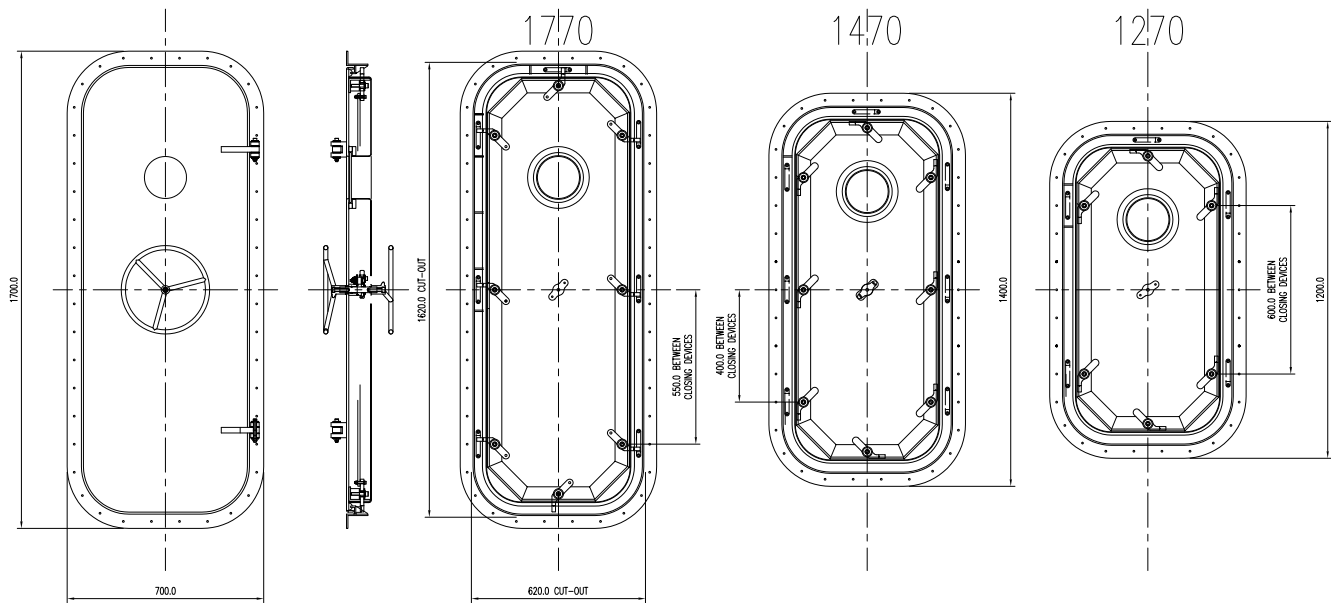
- DNV Rules for Ships Pt 3, Ch 3, Sec 6, G302 IACS SC156

01 Watertight door

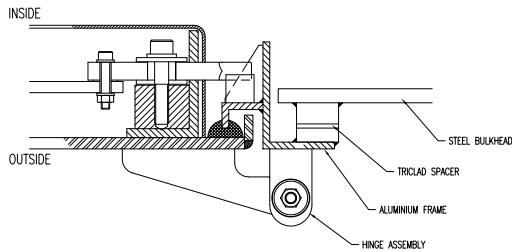
02 6 and 8 point locking door

Marine glass. World class.

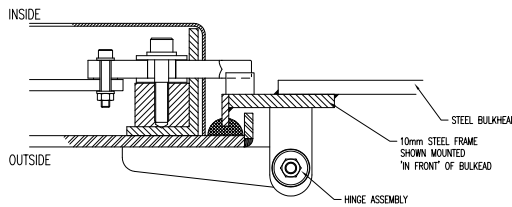
Typical Sections (not to scale)



CURRENT DESIGN
WITH WELDED ALUMINIUM
OUTER FRAME



PROPOSED DESIGN
WITH STEEL
OUTER FRAME



NOTES:

- 1) DOOR MAY BE BOLTED OR WELDED TO BULKHEAD.
- 2) DESIGN PRESSURE: 5.5m HEAD (54 kPa).
- 3) DESIGNED IN ACCORDANCE WITH DNV RULES FOR SHIPS AND HIGH SPEED, LIGHT CRAFT. DNV RULES FOR SHIPS PT 3, CH 3, SEC 6, SEC G.
- 4) VARIOUS SIZES AVAILABLE BETWEEN 1700x700 (G-120-60-1770) AND 1200x700 (-1270).

Configurations and Hardware



6 point locking door



Lock detail